

Data Stewardship at TU Delft, The Netherlands



Esther Plomp, Data Steward, Faculty of Applied Sciences

e.plomp@tudelft.nl / @PhDToothFAIRy

4 September 2019, Essen

<https://www.doi.org/10.5281/zenodo.3378014>

Outline of the presentation

- Key principles of Data Stewardship at TU Delft
- Role in the institution/faculty
- Challenges

TU Delft?

(Delft University of Technology)



- 8 Faculties
- ~5,000 employees


<https://doi.org/10.5281/zenodo.2684278>

<http://www.uniglobetravel.com/315/destination-guides/country/Netherlands#map>

Key principles behind the project

- Research/Researcher is central
 - Final responsibility of RDM
- Data Stewards are consultants, not police!
 - Objective: improve culture (not compliance)





Openness:
one of the four major principles



Impact for a
better society



TU Delft Strategic Framework 2018-2024

Good data management is a necessary prerequisite to Open Science & reproducible research

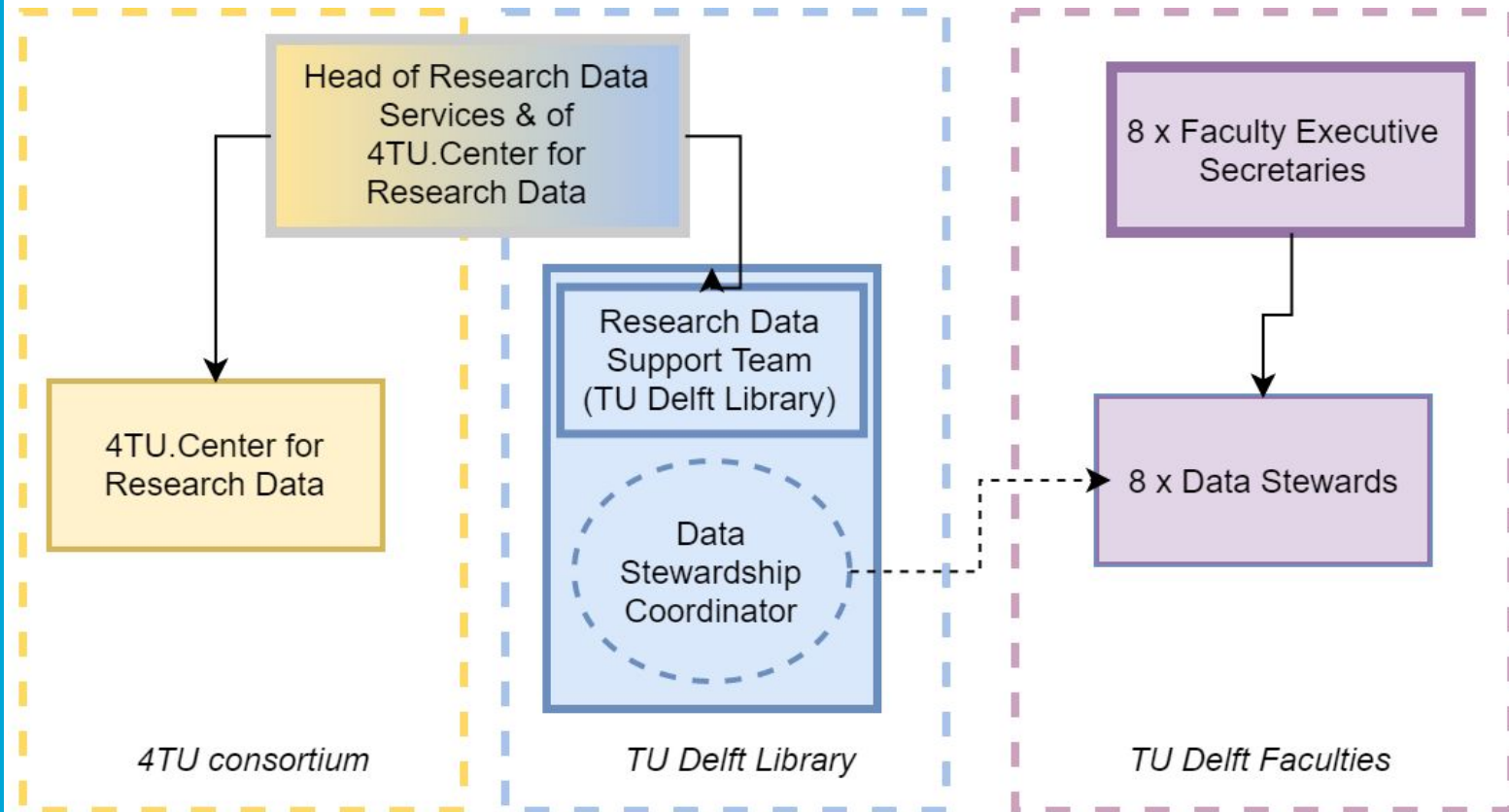


<https://doi.org/10.5281/zenodo.2684278>

Outline of the presentation

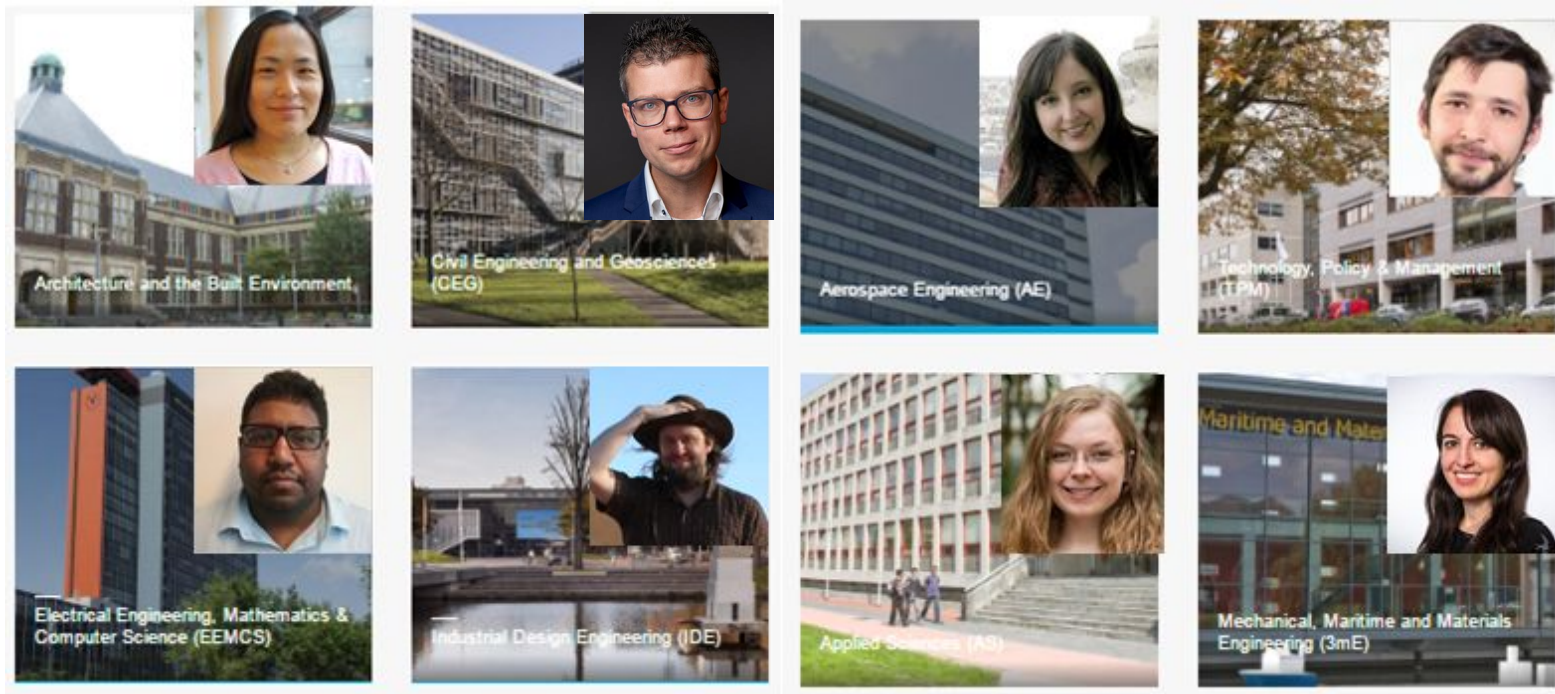
- Key principles of Data Stewardship at TU Delft
- Role in the institution/faculty
- Challenges

Data Stewards within data support structure at TU Delft



<https://doi.org/10.5281/zenodo.2684278>

Subject-specific Data Steward at every Faculty



Training in data management provided:

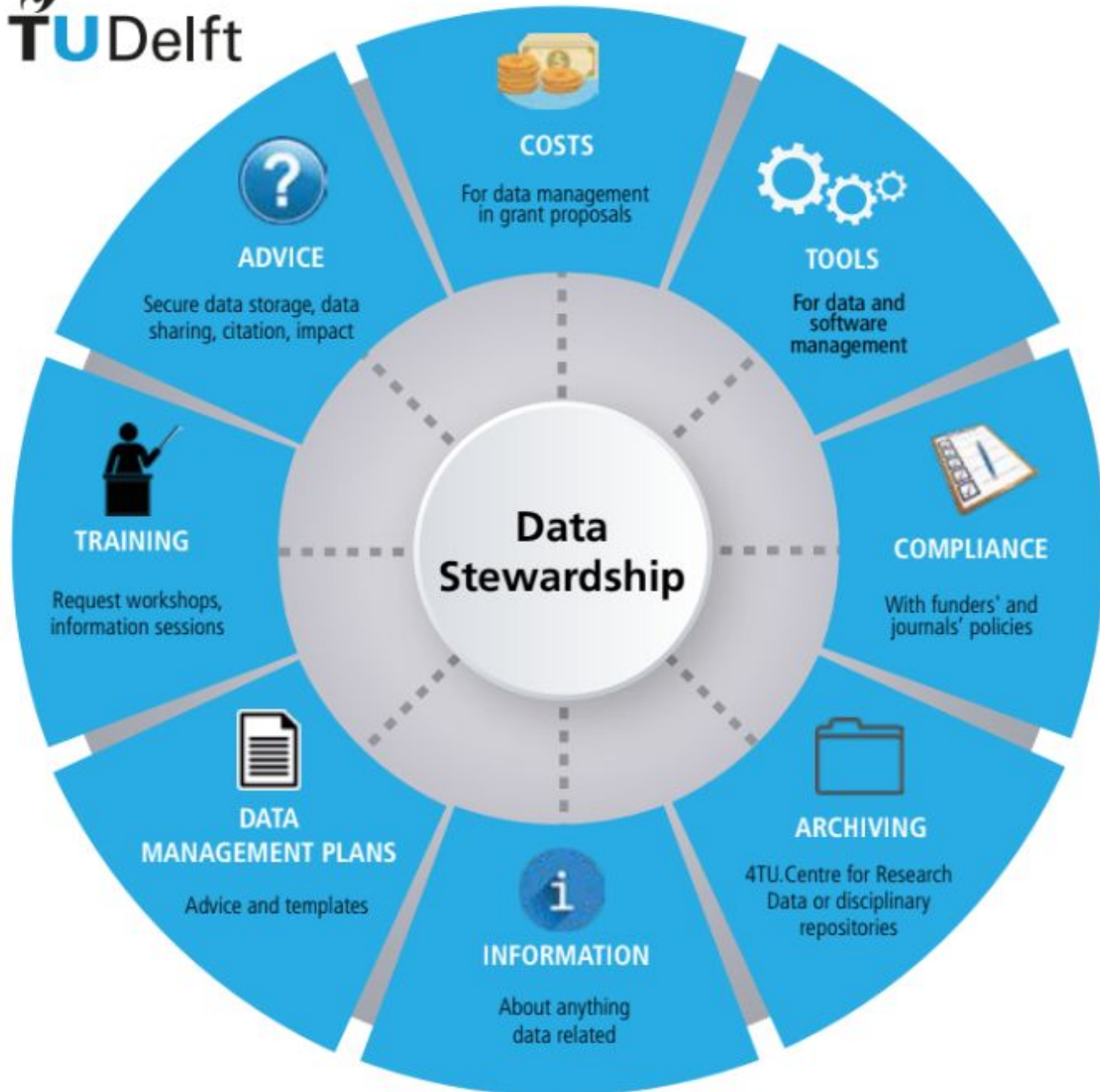
<https://openworking.wordpress.com/2017/09/18/training-for-data-stewards/>

<https://doi.org/10.5281/zenodo.2684278>

What do the Data Stewards do?



- First contact points for any data questions
- Referral to specialists as needed



Disciplinary support also reflected in policy development

TU Delft Research Data Framework Policy

- Roles and responsibilities at the university level
- Several compulsory statements
- Template for faculties
- Published (<https://doi.org/10.5281/zenodo.2573160>)

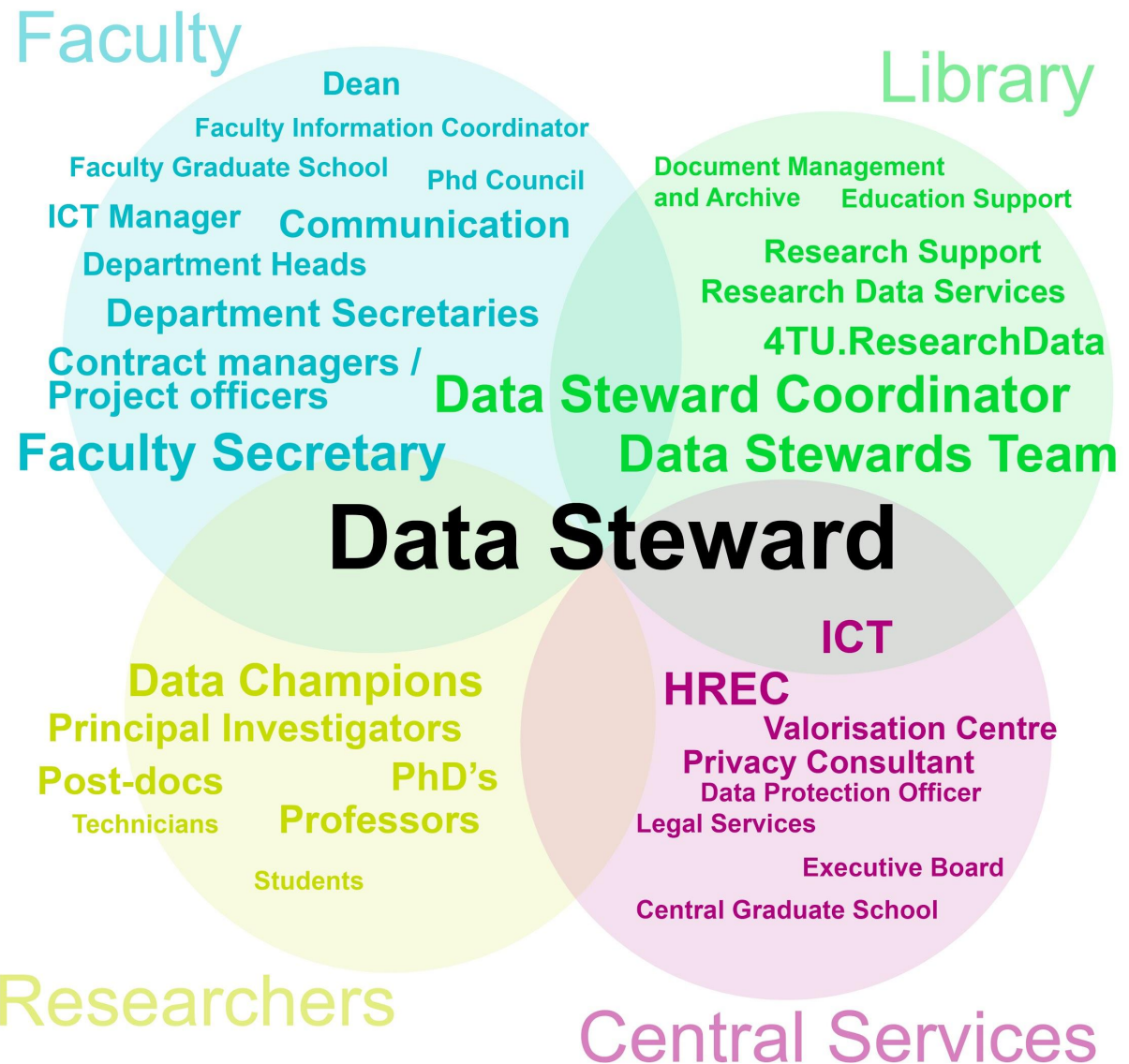


8 separate Faculty Data Policies

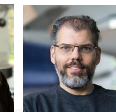
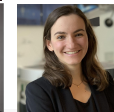
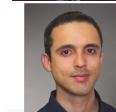
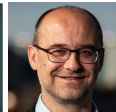
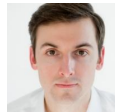
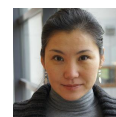
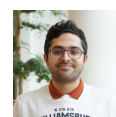
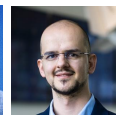
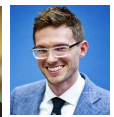
- Roles and responsibilities at the faculty level
- Reflecting disciplinary differences
- *In development*

<https://doi.org/10.5281/zenodo.2684278>

Data Steward Network



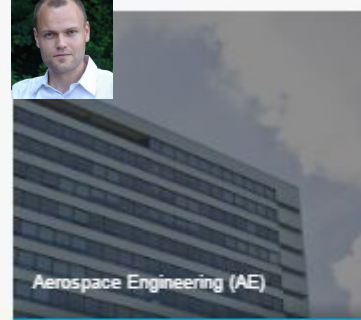
47 Data Champions at TU Delft



Architecture and the Built Environment



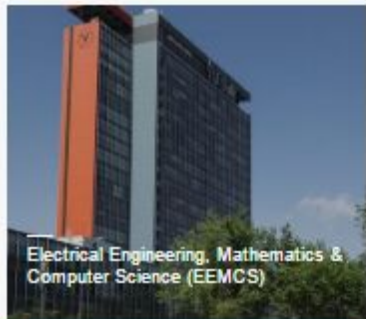
Civil Engineering and Geosciences (CEG)



Aerospace Engineering (AE)



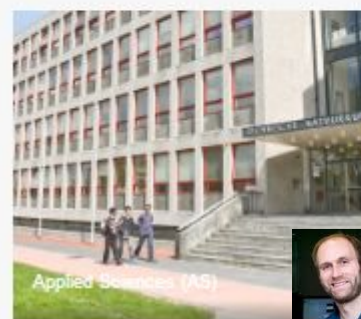
Technology, Policy & Management (TPM)



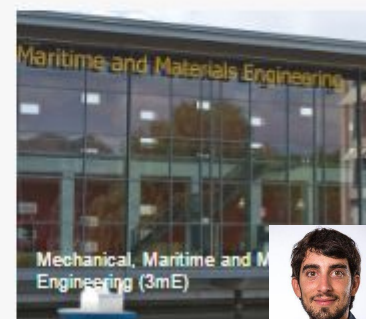
Electrical Engineering, Mathematics & Computer Science (EEMCS)



Industrial Design Engineering (IDE)

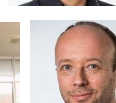
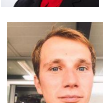
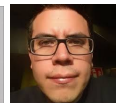
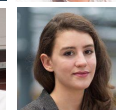
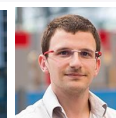
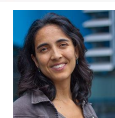


Applied Sciences (AS)



Maritime and Materials Engineering

Mechanical, Maritime and Materials Engineering (3mE)



Challenges

- **Teambuilding**
 - Peer support/exchange network
- **Career** progression
- Central **funding** to the end of 2020
 - Data Stewards have a postdoc salary
 - 8 x 65k Euro (1.0 FTE) = 515k Euro/year



Questions or more info?

Project updates: <https://openworking.wordpress.com/data-stewardship/>

Zenodo collection of Data Stewards outputs:

<https://zenodo.org/communities/datastewards/>

Data Stewardship:

www.tudelft.nl/library/datastewardship/

4TU.Centre for Research Data:

<http://researchdata.4tu.nl/en/home/>

Data Champion initiative:

<https://www.tudelft.nl/en/library/current-topics/research-data-management/r/data-stewardship/data-champions/>